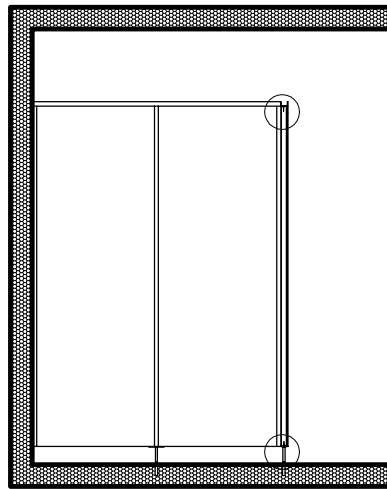
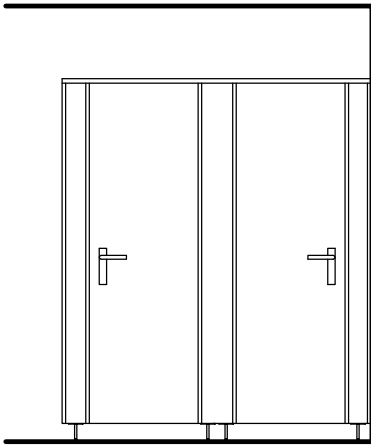


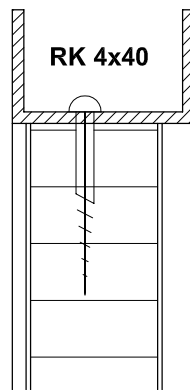
# Trennwände

10.01.01 / 08

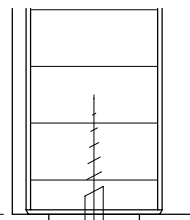
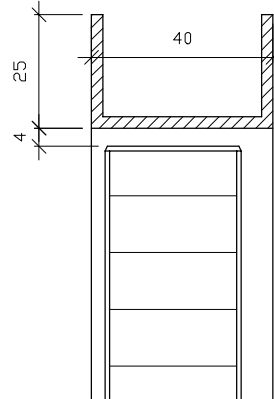
Schnitt: Profile und Anschlüsse



Front



Türe



Trennwand-Stütze

RK 4 x 25

100

## Montagehinweis:

1. Achtung Bodenheizung
2. Bohrloch  $\varnothing 14\text{mm}$
3. Schrauben RK 4x25  
Benötigt Winkelschrauber